



JSPM's

Jayawant Institute of Management Studies, Pune



University Examination Related Queries

A] The students of MBA & MCA can visit the university website for any query related to university examination.

The link for Examination Section, Savitribai Phule Pune University is:

➤ <http://exam.unipune.ac.in>

B] The different links which are made available under student section category

- Schedules
- Timetable
- Seating Arrangement
- Exam Form
- Results
- Photocopy & Revaluation
- Unfair Means(Copy Case)
- Contact details for various online Applications
- Certificates
- Ordinance of exam
- Syllabus
- Previous Question Paper
- Manual Exam Forms

C] As per circular no. 239 of 2013 dated 01-11-2013 and circular no. 60 of 2015 management council of university has approved new ordinance for:

- a. Supply of photo copy of assessed answer book
- b. Revaluation of answer book of theory paper

D] Student should communicate to college, if having any queries regarding exam form and the only college will communicate to university from its official mail id to the

examsupport@pun.unipune.ac.in

examcoordination@pun.unipune.ac.in

E] Contact details:

University Examination Coordination Section

020-25601206/020-25601218

F] Queries/Grievances related to Internal Examination (Mid-Term & End-Term) should contact to College Examination Officer

**Evaluation System
(MBA)**

University Evaluation

Internal Evaluation

**Written/Subjective
Evaluation**

Online Evaluation

Mid Term Examination

End Term Examination

Project/Dissertation

Open Book Test

Class Test

Assignment

Presentation

**Evaluation System
(MCA)**

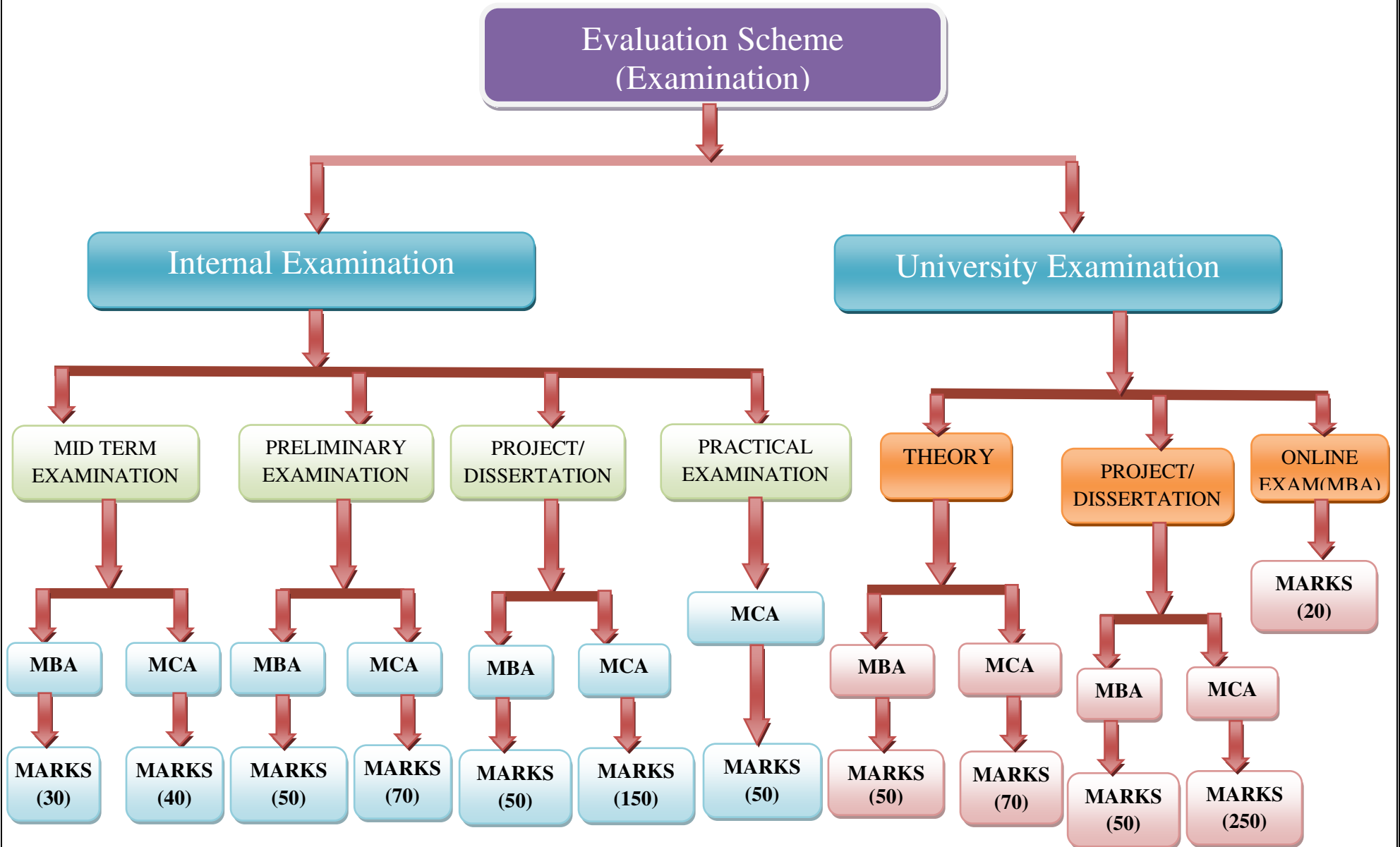
University Evaluation

**Written/Subjective
Evaluation**

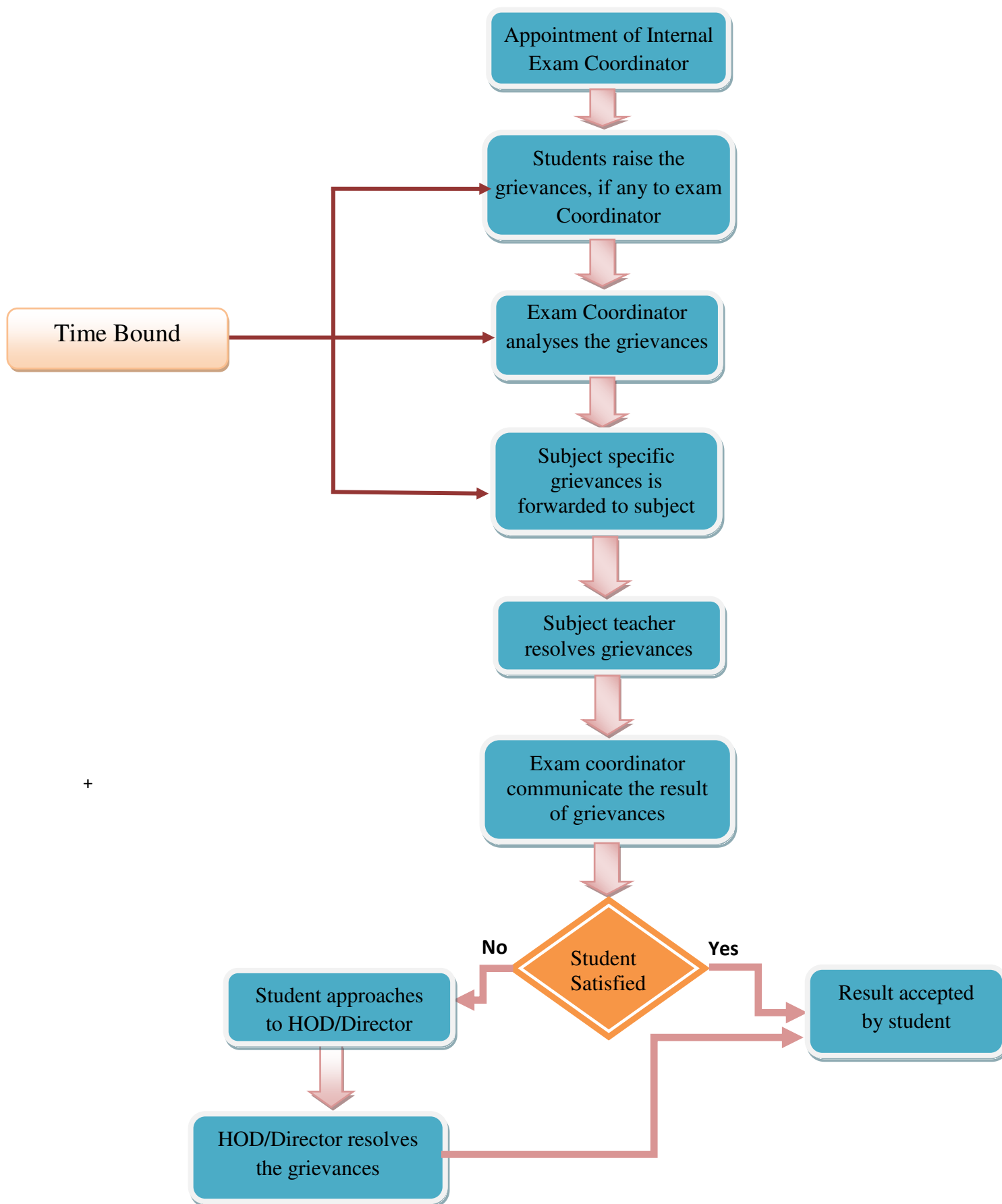
Internal Evaluation

- Mid Term Examination**
- End Term Examination**
- Project Examination**
- Open Book Test**
- Class Test**
- Assignment**

Examination Scheme: MBA & MCA



INTERNAL EXAMINATION GRIEVANCES MECHANISM



University Examination Grievance System

