



JSPM's
JAYAWANT INSTITUTE OF MANAGEMENT STUDIES
(Approved by AICTE, New Delhi, Recognized by Gov. of Maharashtra
& Affiliated to Pune University)

S. No. 80/2, Pune-Mumbai Bypass Highway, Tathawade, Pune – 411033.

Phone: +91-20-64731454/55 **Telefax:** +91-20-22933424.

E-mail: director_jims@jspm.edu.in **Website:** www.jspm.edu.in

AISHE Code: C-60096

Accredited by NAAC With "A" Grade



Dr. Prof. T. J. Sawant
B.E.(Elec.), PGDM, Ph.D
Founder- Secretary

Dr. Bipin Bankar
B.Com, MBA, Ph. D.
Director

4.2 Library as a learning Resource

4.2.1 Library is automated using Integrated Library Management

System (ILMS)

| Sr. No | Title |
|--------|--------------------|
| 1. | Library Details |
| 2. | ILMS Details |
| 3. | Process of Library |

Library Details

The Library plays a central role in enhancing the quality of academic and research environment in Education institutions. **The Institute library** is a place in the Institute where huge collections of academic books, journals, magazines, research projects, rare books, other knowledgeable books and newspapers are kept. These books are made available to the students to increase their knowledge and understanding on various subjects. The college library is an important hub of student life. There, student can check out books, conduct their research, find a quiet place to study, and maybe even flip through magazine. The students can extend their search with use of internet, e-books, e-journals etc. made available in the digital library. The Institute library exhibits positive impact on the academic achievement of the student. Students can perform better during examination and placement as students are explored to the knowledge through various means.

JIMS Library

Library Services:

JIMS Central Library provide different types services to the student and Staff Members such as

Sr.No. Services

- 1 Students I-Card Issues
- 2 Books ,Journals, e- Journals, Project & CD Access.
- 3 Reference Section with knowledgeable books
- 4 News Papers
- 5 OPAC Facility
- 6 Digital Library

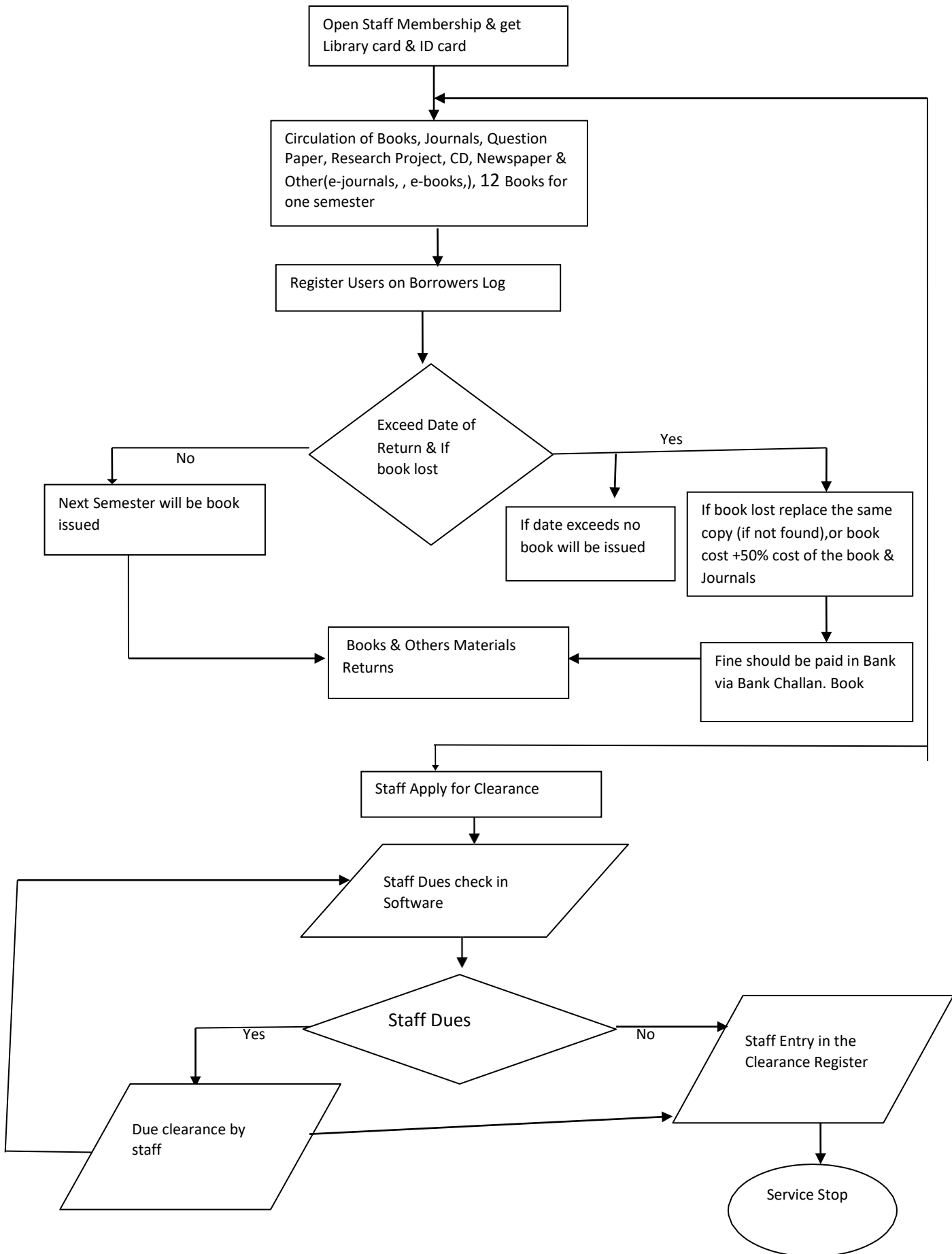
ILMS Details:

The Institute installed *Integrated Library Management System (ILMS)* namely “*AutoLib*” in the year 2009. The Institute started using it in the year 2012. Library has provision of s/w such as AutoLib software and OPAC (Online Public Access Catalogue) for students & faculty members to search books by title/ author name etc.

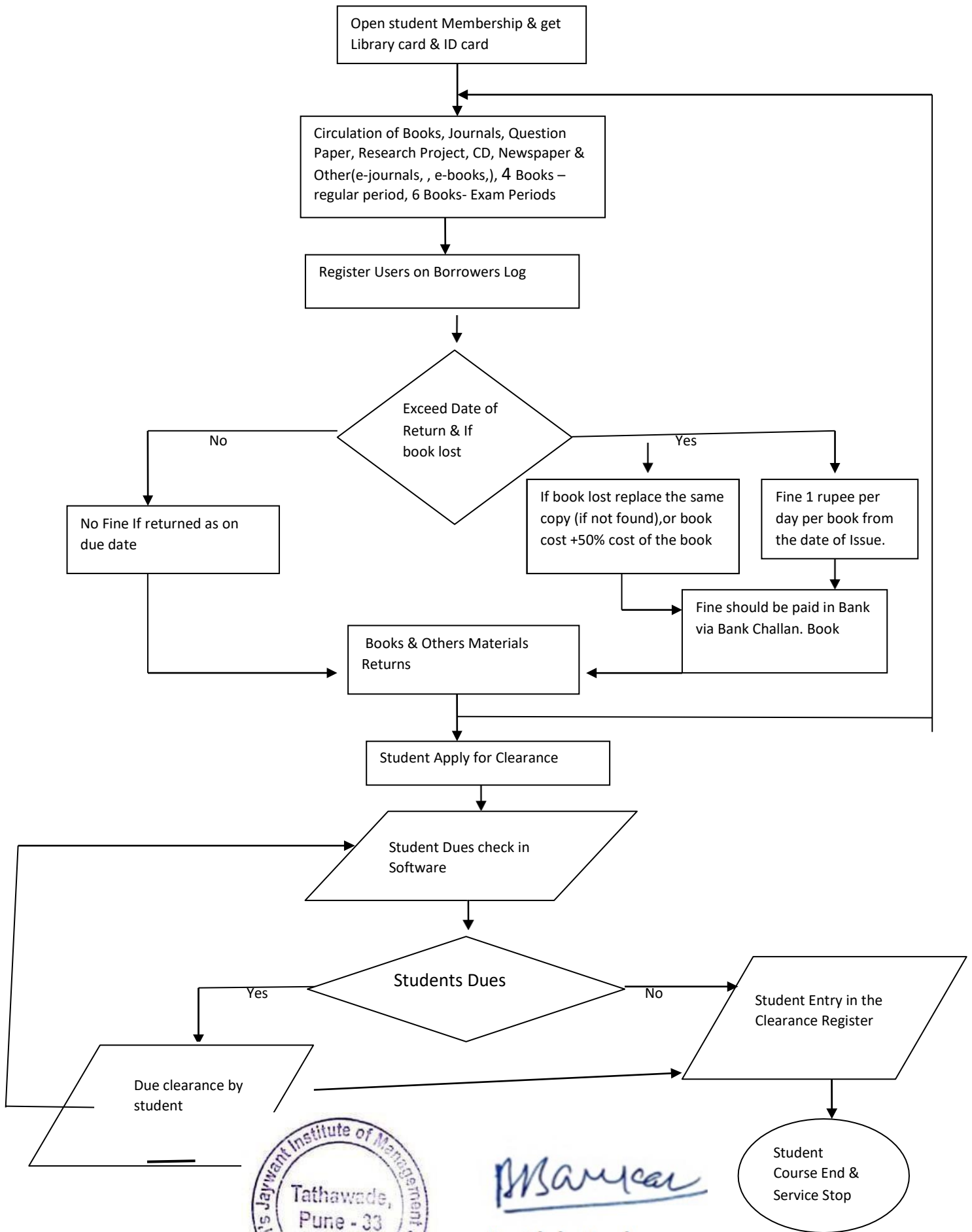
Function of Autolib

| Sr.No. | Autolib description |
|---------------|------------------------------------|
| 1 | Student & Staff Membership Entries |
| 2 | Books Entries |
| 3 | Books Issue & Returns |
| 4 | News Paper Entries |
| 5 | Dues Collection |
| 6 | OPAC |
| 7 | Students I-Card Print |
| 8 | Students Barcode Print |
| 9 | Books Barcode Print |
| 10 | Books Spine Labels Print |
| 11 | Books Card Print |
| 12 | Stock Checking |
| 13 | View the Reports |

Library Flow Chart Staff



Library Flow Chart student



Banekar
Dr. Bipin Bankar
Director

