



JSPM's
JAYAWANT
INSTITUTE OF MANAGEMENT STUDIES



(Approved by A.I.C.T.E, New Delhi, Recognised by Govt. of Maharashtra & Affiliated to Savitribai Phule University of Pune)

Prof. Dr. T. J. Sawant
B.E., (Elec) PGDM, Ph.D
Founder - Secretary

S. No. 82/2, Pune-Mumbai By Pass Highway, Tathawade, Pune 411 033.

Ph. : 8237076937/38, 020-22932677 Tele-fax : 020-22933424

www.jspmjims.edu.in Email : director_jims@jspm.edu.in

Dr. Priyanka A. Singh
B. Sc. (Hons), MBA, Ph. D.
Director

Declaration

The presence of Information and Communication Technologies (ICT) in education has made tremendous change in teaching learning process. The JSPM's Jayawant Institute of Management studies always strive for providing and maintaining ICT enabled environment for the benefit of research and academic activities of the students. The Institute has 5 Classrooms (3 for MBA and 2 for MCA) and 2 Seminar Halls with ICT facilities. The classrooms and seminar halls are equipped with projector, computer with Internet connection, Wi-Fi and MOODLE access. Two classrooms are equipped with smart board.

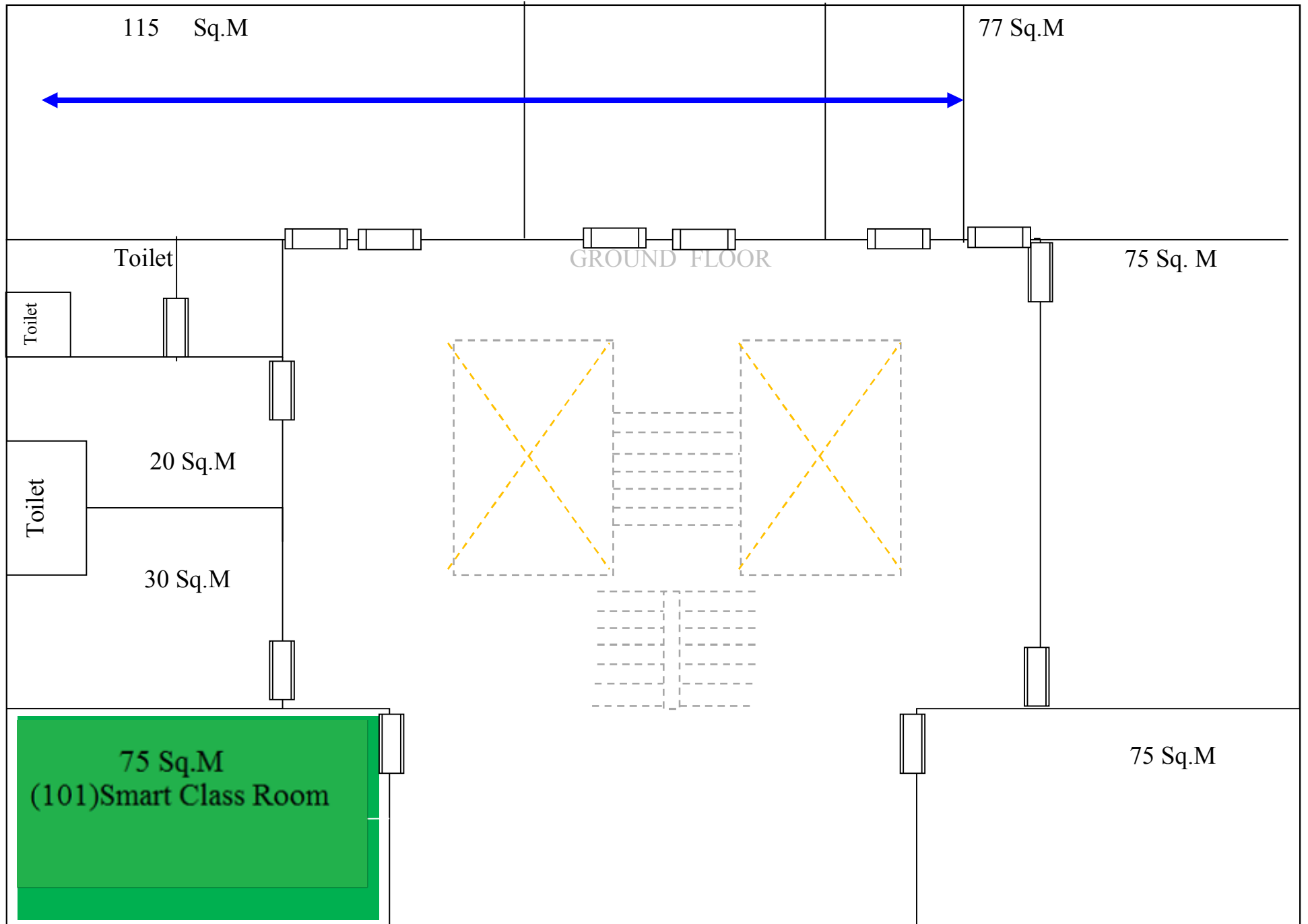
List of Class Rooms, Seminar Halls enabled with ICT Facility

Room Name/ Type	Room No.	ICT Facilities available
Class Room	101	Smart board, LCD Projector, Computer with internet connection (LAN), Wi-Fi
Class Room	108	LCD Projector, Computer with internet connection (LAN), Wi-Fi
Class Room	202	LCD Projector, Computer with internet connection (LAN), Wi-Fi
Class Room	302	Smart board, LCD Projector, Computer with internet connection (LAN), Wi-Fi
Class Room	305	LCD Projector, Computer with internet connection (LAN), Wi-Fi
Seminar Hall	404	LCD Projector, Computer with internet connection, Wi-Fi
Seminar Hall	405	LCD, Computer with internet connection, Wi-Fi

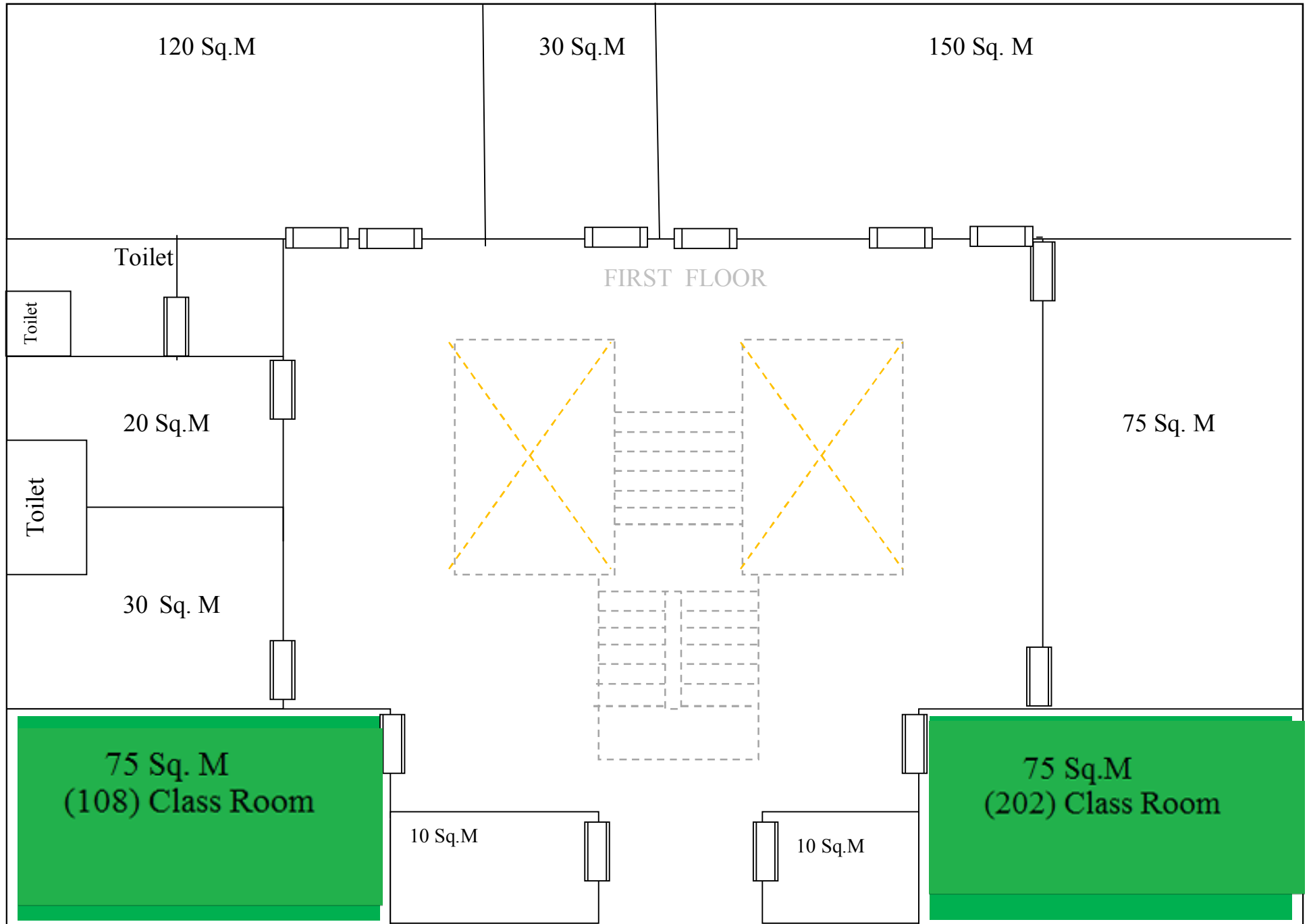



Dr. Priyanka Singh
Director

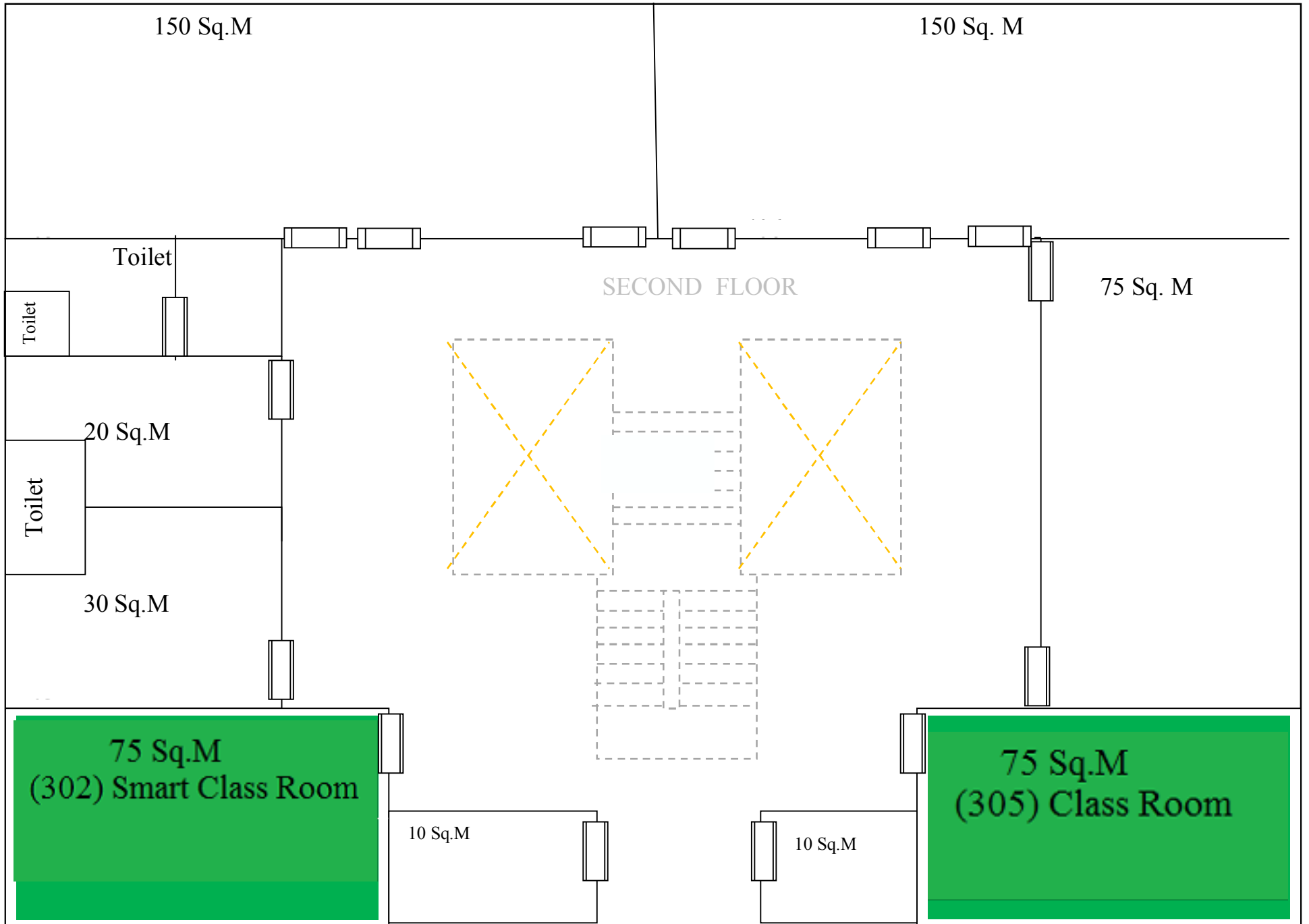
JIMS- Floor Plan (Ground Floor) PRESENT



JIMS- Floor Plan (First Floor)



JIMS- Floor Plan (Second Floor)



JIMS- Floor Plan (Third Floor)

