



JSPM's

JAYAWANT INSTITUTE OF MANAGEMENT STUDIES

(Approved by AICTE, New Delhi, Recognised by Gov. of Maharashtra & Affiliated to Pune University)

S. No. 80/2, Pune-Mumbai Bypass Highway, Tathawade, Pune – 411033.

Phone: +91-8237076937/38 Telefax: +91-20-22933424.

E-mail: director_jims@jspm.edu.in Website: www.jspmjims.edu.in



Prof. T. J. Sawant
D.E.E., B.E. (Elec.) MISTE
Founder- Secretary

Dr. Priyanka A. Singh
B.Sc. (Hons), MBA, Ph. D.
Director

Metrics: 7.1.9 Friendliness Resources available for Differently abled

The institute claims **7 and above option** regarding the resources available to the differently abled students. Summarized Friendliness Resources available for Differently abled (Divyangjan) in the institute are as below:

1. Physical Facility

JIMS provides various physical facilities which are beneficial for the differently abled students. All the listed facilities are available in ground floor.

- Wheelchair
- Digital Library
- Drinking Water Cooler
- Classroom located at ground floor
- Canteen
- Stationary Store at ground floor





Classroom at Ground Floor



Wheelchair Facility



Library Facility





Stationary Store Located at
Ground Floor



Canteen Facility at Ground Floor

2. Provision for Lift

The institute has availability of lift facility for Differently Abled (Divyangjan)



3. Ramp/Rails

Institute has ramp facility for Differently Abled (Divyangjan). Wheelchair is available in the campus for the Differently abled (Divyangjan) students/staff or injured.



4. Rest Rooms

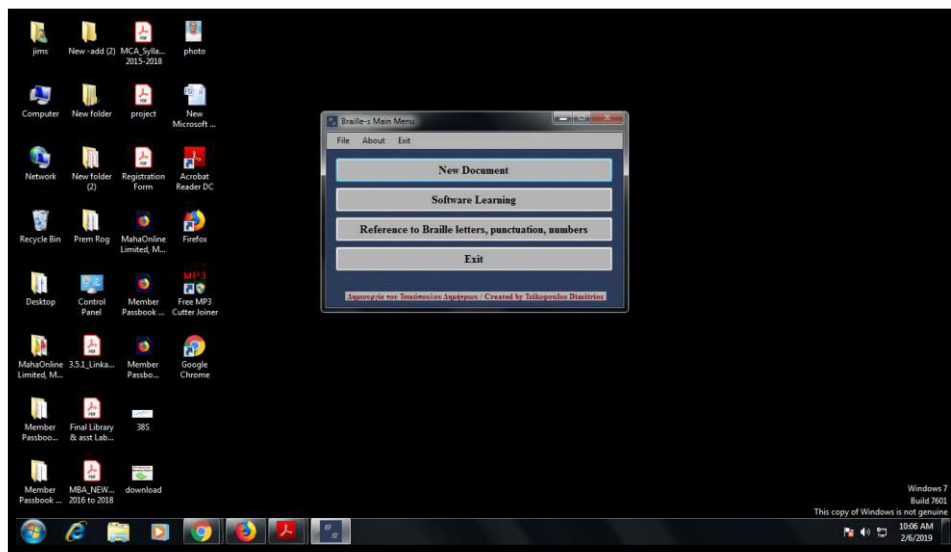


5. Scribes for Examination

As per the instructions of Savitribai Phule Pune University, the institute provides scribes facility for Differently abled (Divyangjan) / injured student who are unable to write their examination.

6. Braille Software

The institute is having Braille facility which can be availed by the needy students from the library of the institute which is situated in the ground floor of the institute building.



Screenshot of Braille Software

7. Any other similar facility

Apart from the above facilities, the institute also provides following facilities and resources for differently abled.





Special Single Window System for Differently Abled Students




ATM Facility within campus





Reserved Parking for Differently Abled (located near Ramp)




Dr. Priyanka Singh
Director